

# Exergen Verde Growth Does brown coal have a green future?



## Who is Exergen Pty Ltd?

- An Australian company operating in brown coal sector for 15 years.
- Holder of Victorian lignite including valuable deposits of Leonardite.
- Dedicated to socially and environmentally responsible use of lignite.

## What is Verde Growth doing?

- Exergen's agricultural division developing Leonardite products.
- Extensive R&D with Universities and farmer research organisations.
- Manufacturing upgraded products and running multiple farm trials.

## Why are we focused on Leonardite?

- Circa 30% reductions in the use of NPKS based chemical fertilizers.
- Remediation of damaged soils and building of new productive soils.
- Mitigate climate change through soil sequestration of various GHGs.

# Verde Growth Lignite, Leonardite and Agriculture



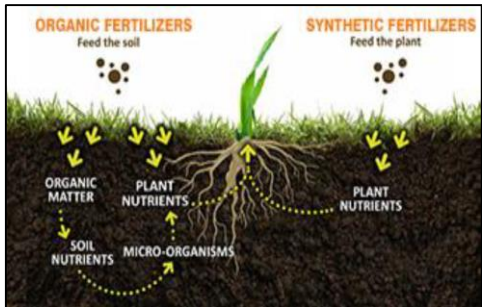
## What is Lignite?

- Essentially fossilized plant biomass that underwent humification.
- Deposited during opening of Bass Strait 25 to 50 million years ago.
- Peat was subjected to mild heat and pressure over millions of years.



## What is Leonardite?

- Found in upper weathering zones of Victoria's thick lignite deposits.
- A humate rich, partially oxidized lignite more in common with soils.
- High sulphur content, cation exchange capacity and e-conductivity.



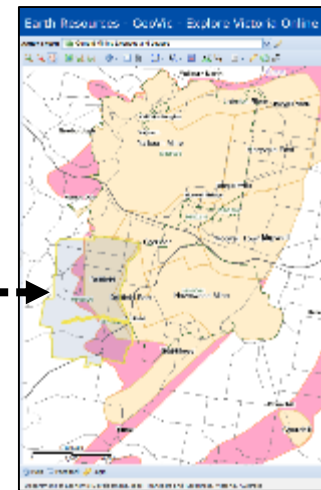
## What are the agricultural benefits?

- Stimulates microbiology, improves seed germination and crop yield.
- Improves moisture holding, organic carbon loads and soil structure.
- Amends acid and saline soils and reduces environmental impacts.



# Verde Growth

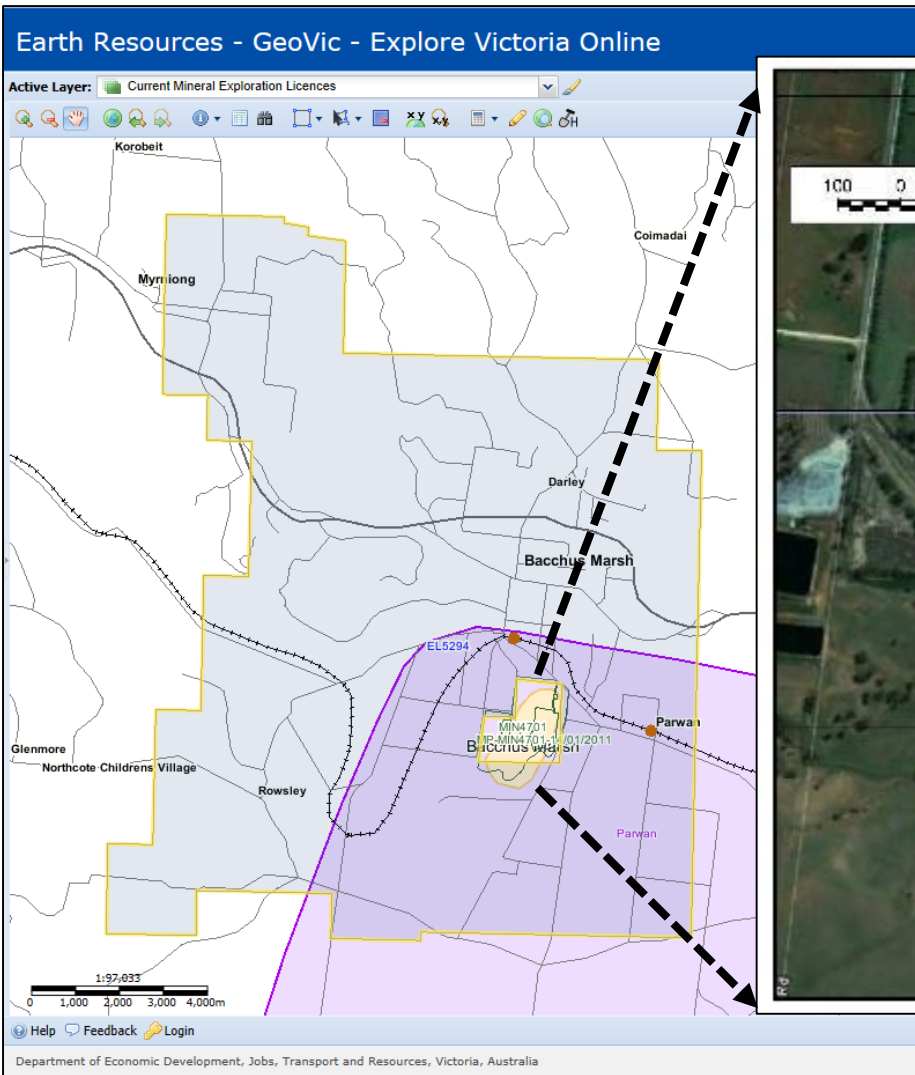
## Lignite Deposits and Trial Locations





# Verde Growth

## Sourcing the Leonardite at Bacchus Marsh





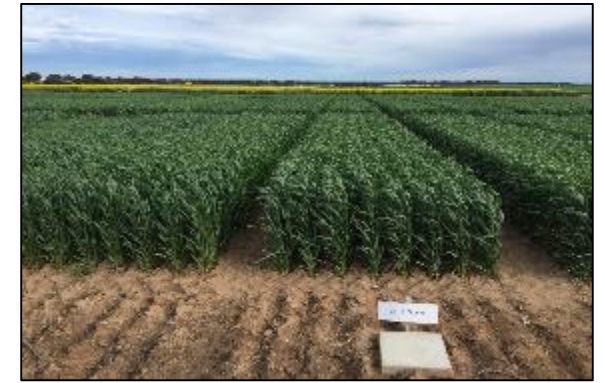
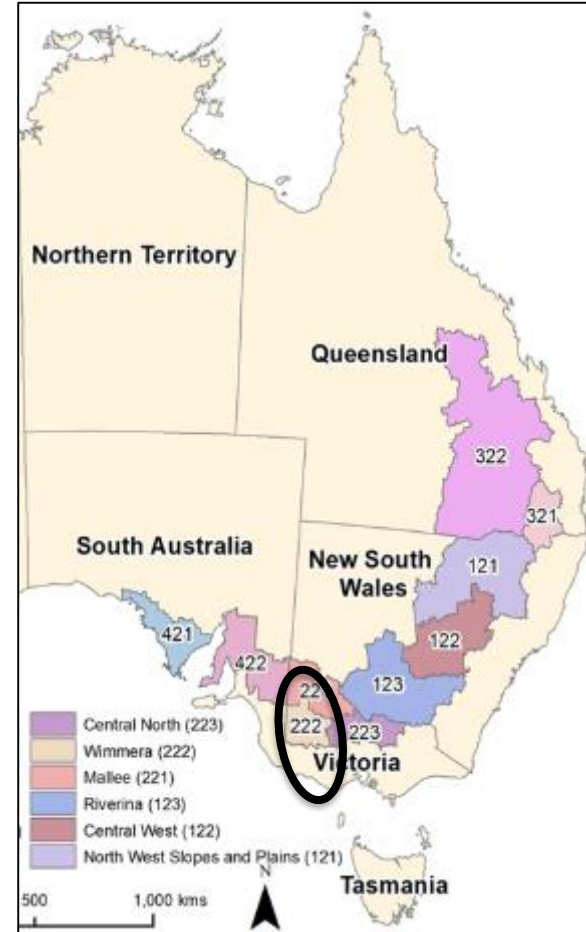
# Verde Growth

## Farm Trials on Sugar Cane and Wheat



### Sugar lifecycle is 5 years

- 2016 results encouraging
- 2017 year 2 await results



### Wheat trials in many soils

- 2016 results encouraging
- 2017 year 2 await results





### Leonardite Product Supply

- Planning for the Bacchus Marsh and Driffield developments
- Ongoing access to Leonardite from the Bacchus Marsh mine
- Construct a Commercial Demonstration Granulation Facility

### On Farm Field Trials

- Extend the focus of trials into NSW and SA then QLD and WA
- Undertake preliminary liquid extract research and development
- Ramp-up field trials with both granulated and bulk products

### Verde Growth's team

- Some of Australia's leading academic and industrial specialists
- In the sciences, engineering, resources and the environment
- All committed to making a difference for future sustainability

